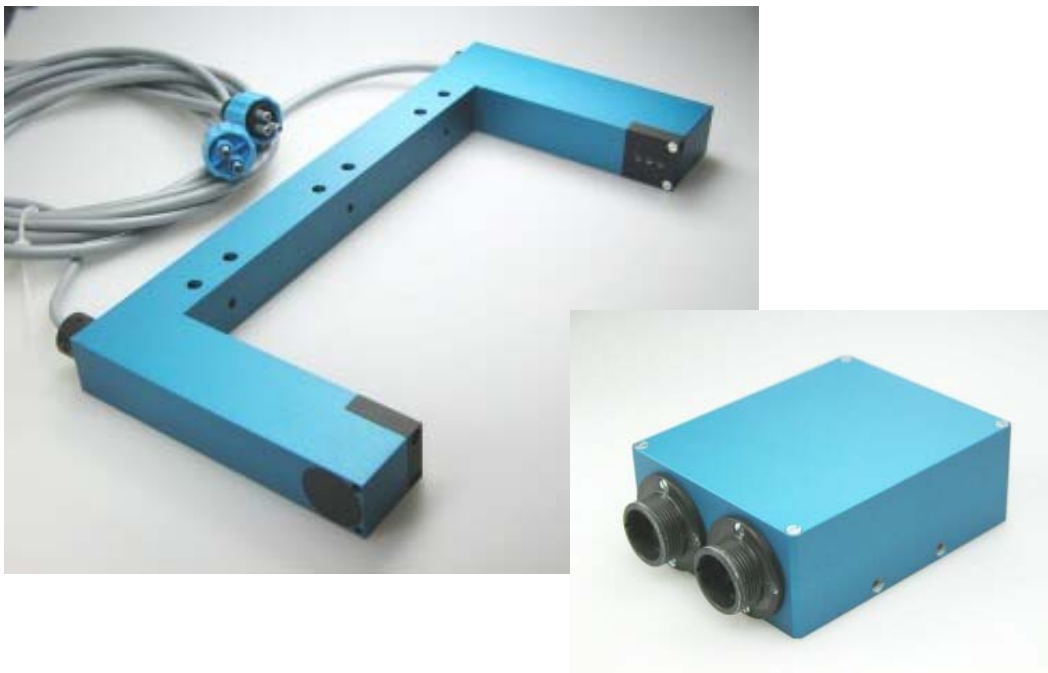


Manual

Software SI-JET2-Scope V3.0

(PC-Software for Microsoft® Windows® Vista, XP, 2000, NT® 4.0, Me, 98, 95)

for the spray jet monitoring sensor SI-JET2



This manual describes the installation of the PC software for the SI-JET2 sensor. As a support for commissioning of the spray jet sensor this manual explains the functional elements of the graphic Windows® user interface.

The SI-JET2 spray jet sensor detects the radiation that is transmitted by the measuring object. It uses a red-light LED with adjustable transmission power as a light source. An integrated 3-fold receiver for the LEFT, CENTRE, and RIGHT component of the light transmitted by the measuring object is employed as a receiver.

The current density and symmetry are taught to the sensor through an external input IN0. As a maximum 31 states can be taught.

Density and symmetry are detected continuously. The respective detected status is provided at the outputs as a binary code (OUTMODE=BINARY) or directly (OUTMODE=DIRECT). The detected adjustment is at the same time visualised by way of 5 LEDs at the housing of the SI-JET2 control unit.

Through the RS232 interface parameters and measured values can be exchanged between the PC and the SI-JET2 sensor. All the parameters for density and symmetry detection can be stored in the non-volatile EEPROM of the SI-JET2 sensor. When parameterization is finished the color sensor continues to operate with the current parameters in "stand alone" mode without a PC.

0. Contents

| | Page |
|---|------|
| 1. Measured variables | 3 |
| 2. Measuring principle | 4 |
| 2.1 Evaluation modes..... | 4 |
| 2.2 Teach process..... | 4 |
| 3. Installation of the SI-JET2-Scope software | 5 |
| 4. Operation of the SI-JET2-Scope software..... | 6 |
| 4.1 EVALUATION MODE ABSOLUT | 12 |
| 4.2 EVALUATION MODE RELATIVE..... | 14 |
| 4.3 Function of the data recorder | 15 |
| 4.4 Function of the LED display..... | 19 |
| 5. Connector assignment of the SI-JET2 system | 21 |
| 6. RS232 communication protocol..... | 22 |

1. Measured variables

In this manual, the following measured variables are used for explaining the measurement principle and for representing formulas. The designations also are identical to those on the PC user interface.

| | |
|---------|--|
| CH_L | Current value of channel left |
| CH_C | Current value of channel centre |
| CH_R | Current value of channel right |
| MAX_CHL | Maximum value of channel left during the last 60 seconds |
| MAX_CHC | Maximum value of channel centre during the last 60 seconds |
| MAX_CHR | Maximum value of channel right during the last 60 seconds |
| DENSITY | Current calculated density |
| SYM1 | Current calculated symmetry 1 |
| SYM2 | Current calculated symmetry 2 |
| | |
| D | Taught value for density in Teach Table |
| DTO | Tolerance value for density in Teach Table |
| S1 | Taught value for symmetry 1 in Teach Table |
| S1TO | Tolerance value for symmetry 1 in Teach Table |
| S2 | Taught value for symmetry 2 in Teach Table |
| S2TO | Tolerance value for symmetry 2 in Teach Table |

2. Measuring principle

The following three measurands are picked up and monitored in the production process by the SI-JET2 spray jet monitoring system:

- Spray jet density (hereinafter referred to as density).
- Symmetry 1 (the two outer channels are put into proportion to each other).
- Symmetry 2 (Symmetry 1 is put into proportion to the centre channel).

Depending on the evaluation mode, density and symmetry are calculated as follows.

Evaluation modes

EVALUATION MODE ABSOLUTE:

$$DENSITY = \frac{CH_L + CH_C + CH_R}{3} \qquad SYM1 = \frac{CH_L}{CH_L + CH_R} * 1000$$

$$SYM2 = \frac{CH_C}{CH_C + \frac{CH_L + CH_R}{2}} * 1000$$

EVALUATION MODE RELATIVE:

$$CHL_N = 4096 - \frac{CH_L}{MAX_CHL} * 4096 \qquad CHC_N = 4096 - \frac{CH_C}{MAX_CHC} * 4096 \qquad CHR_N = 4096 - \frac{CH_R}{MAX_CHR} * 4096$$

$$DENSITY = CHC_N \qquad SYM1 = \frac{CHL_N}{CHL_N + CHR_N} * 1000$$

$$SYM2 = \frac{CHC_N}{CHC_N + \frac{CHL_N + CHR_N}{2}} * 1000$$

TEACH process

The teach process can be performed either with the parameterisation software, by way of the teach input (IN0 PIN3 green at the cab-las8/SPS cable), or by means of the switch at the housing.

When teaching is performed through the IN0 input, the tolerance values for density and symmetry must first be stored once in the EEPROM of the control unit with the help of the parameterisation software.

Before input IN0 is activated, the status to be taught must be present at the sensor front-end, i.e. spraying must first be switched on, and then IN0 must be set to +24V.

The current status is taught to as many rows in the Teach Table as have been selected under MAXVEC-No. classification is performed by way of different set tolerances.

3. Installation of the SI-JET2-Scope V3.0 software

Hardware requirements for successful installation of the SI-JET2-Scope software:

- IBM PC AT or compatible
- VGA graphics
- Microsoft® Windows® Vista, XP, Me, 2000, 98, NT® 4.0 or 95
- Serial RS232 interface at the PC
- Microsoft-compatible mouse
- Cable for the RS232 interface
- CD-ROM drive
- Approx. 5 MB of free hard disk space

The SI-JET2-Scope software can only be installed under Windows. Windows must therefore be started first, if it is not yet running.

Please install the software as described below:

1. The software can be installed directly from the installation CD-ROM. To install the software, start the SETUP program in the INSTALL folder of the CD-ROM.
2. The installation program displays a dialog and suggests to install the software in the C:\"FILENAME" directory on the hard disk. You may accept this suggestion with **OK** or **[ENTER]**, or you may change the path as desired. Installation is then performed automatically.
3. During the installation process a new program group for the software is created in the Windows Program Manager. In the program group an icon for starting the software is created automatically. When installation is successfully completed the installation program displays "Setup OK".
4. After successful installation the software can be started with a left mouse button double-click on the icon.

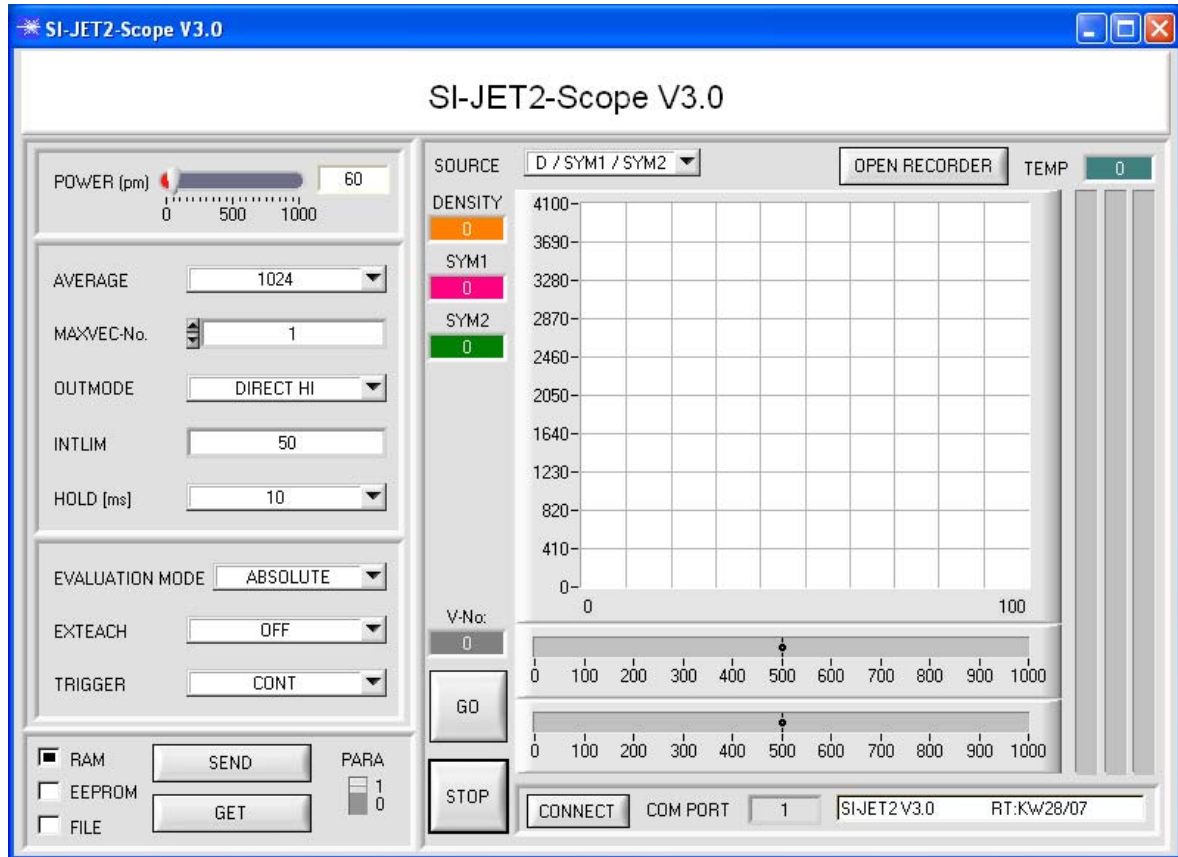
Windows® is a trademark of the Microsoft Corp.
VGA™ is a trademark of the International Business Machines Corp.

4. Operation of the SI-JET2-Scope V3.0 software

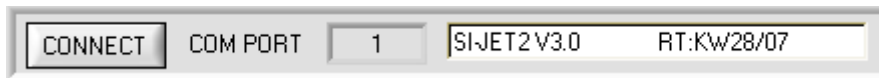
Please read this chapter first before you start to adjust and parameterise the SI-JET2 sensor.

Pressing the right mouse button on an individual element will call up a short help text.

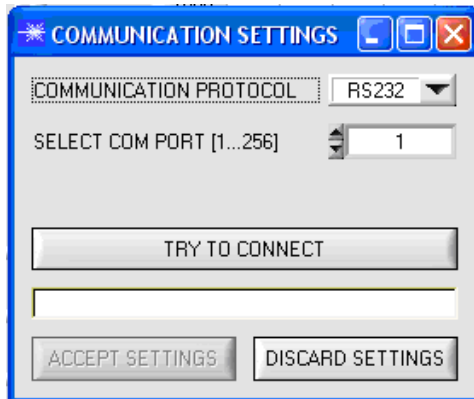
When the SI-JET2-Scope software is started, the following window appears on the Windows interface:



The SI-JET2-Scope software starts with the standard configuration COM1 and the respective communication status.



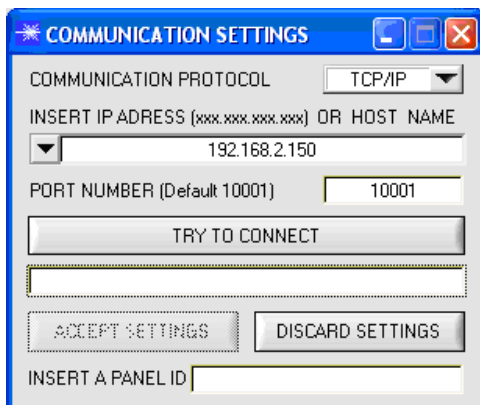
CONNECT:
 Pressing the **CONNECT** button opens a window for selecting and configuring the interface. The currently set connection type is displayed beside the **CONNECT** button.



CONNECT:
 The **COMMUNICATION PROTOCOL** function field is used for selecting either an RS232 or a TCP/IP protocol. If RS232 is selected, a port from 1 to 256 can be selected with **SELECT COM PORT**, depending on which port the sensor is connected to.

If the sensor should communicate through a local area network, an RS232 to Ethernet adaptor will be needed. This adaptor makes it possible to establish a connection to the sensor with the TCP/IP protocol.

The network adaptors that are available from us are based on the Lantronix XPort module. For parameterising these adaptors (assigning of an IP address, setting of the Baud rate of 19200) please download the "DeviceInstaller" software that is provided free of charge by Lantronix at <http://www.lantronix.com/>. DeviceInstaller is based on Microsoft's ".NET" framework. Detailed operating instructions for the "DeviceInstaller" software also are available from Lantronix.




In order to establish a connection to the adaptor, its IP address or **HOST** name must be entered in the field **INSERT IP ADDRESS (xxx.xxx.xxx.xxx) OR HOST NAME**. The **DROP DOWN** menu (down arrow) shows the last 10 IP addresses that were used. An address from this list can be directly selected by clicking on the respective item. The **DROP DOWN** list is saved and is thus always available when the software is closed.

The **PORT NUMBER** for the XPort-based network adaptors is 10001. This port number must not be changed.

When you press the **TRY TO CONNECT** button, the software tries to establish a connection with the set

parameters. The communication status is shown in the display field. If the sensor answers with its **FIRMWARE ID**, the set connection type can be accepted by pressing **ACCEPT SETTINGS**. You will then be returned to the main panel. If you get a **CONNECTION FAILURE** message, the software could not establish a connection to the sensor. In this case please check if the interface cable is correctly connected, if the sensor is supplied with power, and if the set parameters are correct. Pressing **DISCARD SETTINGS** exits the **COMMUNICATION SETTINGS** panel with the parameters that were set before the panel was started. If a connection has been accepted by pressing **ACCEPT SETTINGS**, the software starts automatically with these settings when called the next time.

| | |
|---|--|
|  | <p>The stable function of the interface is a basic prerequisite for measured value transfer from the PC to the sensor.</p> <p>Due to the limited data transfer rate through the serial RS232 interface (19200 bit/s) only slow changes of the raw signals at the sensor front end can be observed in the graphic output window of the PC.</p> <p>For maintaining maximum switching frequency at the sensor data communication with the PC must be stopped (press the STOP button).</p> |
| <p>ATTENTION !</p> | |

ATTENTION!
 A change of the transmitter power only becomes effective at the SI-JET spray jet sensor after actuation of the **SEND** button in the **MEM** function field!

EVALUATION MODE

EVALUATION MODE:

The SI-JET2 can be operated with two different evaluation modes.

ABSOLUTE:

The absolute status of the three channels CH_L, CH_C, and CH_R is used for evaluation.

RELATIVE:

The current status of the three channels CH_L, CH_C, and CH_R relative to their maximum values in the last 60 seconds is used for evaluation.

See 4.1 and 4.2!

EXTEACH

EXTERN TEACH:

When EXTERN TEACH is activated, the currently present gloss degree or normalized vector (depending on EVALMODE) can be written to the TEACH TABLE by way of the external IN0 input or the TEACH button. The currently present line vector is automatically taken over, starting with line 0, in as many lines as is set in MAXVEC-No..

| No. TEACH TABLE | | | | | | | |
|-----------------|---|-----|----|------|----|------|---|
| | D | DT0 | S1 | S1T0 | S2 | S2T0 | ▲ |
| 0 | 1 | 100 | 1 | 20 | 1 | 20 | |
| 1 | 1 | 200 | 1 | 40 | 1 | 40 | |
| 2 | 1 | 300 | 1 | 60 | 1 | 60 | |
| 3 | 1 | 400 | 1 | 80 | 1 | 80 | |
| 4 | 1 | 1 | 1 | 1 | 1 | 1 | |
| 5 | 1 | 1 | 1 | 1 | 1 | 1 | |

The advantage is that the user does not have to start the parameterisation software for this purpose.

Please note that when this evaluation mode is selected, the tolerances must at the beginning be stored once to the EEPROM.

Furthermore, the MAXVEC-No. also must be set first, and must also be stored in the EEPROM.

ATTENTION!

When the EXTERN TEACH mode is activated, external triggering with EXT1 and EXT2 is not possible, because the sensor only has one input.

The TRIGGER function field will no longer be active.

TRIGGER

TRIGGER:

This function field serves for setting the trigger mode at the SI-JET2 sensor.

CONT:

Continuous gloss value detection (no trigger event required).

EXT1:

Evaluation is started through the external trigger input (IN0 pin3 green of cable cab-las8/SPS) or through clicking the TEACH button. A trigger event is recognized as long as +24V is present at the IN0 input (HIGH active). After the trigger input goes to LOW again, the state (V-No. :) that was last detected will be held at the outputs.

EXT2:

Same behaviour as in EXT1 mode, with the difference that an error state (V-No.: = 255) will be output after the trigger input goes to LOW again.

PLEASE NOTE!

External teaching is not possible when the TRIGGER mode is activated, because the sensor only has one input. The EXTEACH function field will be inactive.



POWER:

In this function field the intensity of the transmitter unit can be adjusted by using the slider or by entering a value in the edit box. A value of 1000 means full intensity at the transmitter

unit, a value of 0 stands for the lowest transmitter intensity adjustment!



AVERAGE:

This function field is used for adjusting the number of scanning values (measurement values) over which the raw signals measured at the receivers are averaged. A higher

AVERAGE default value reduces noise of the raw signals at the receiver unit and there will be a decrease of the maximal available switching frequency of the SI-JET2 spray jet sensor.

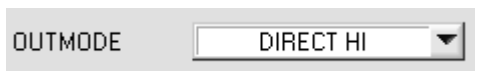


MAXVEC-No.:

This function field serves for setting the number of spray states to be checked.

In BINARY mode the maximum number of spray states to be checked is 31. In DIRECT HI or DIRECT LO mode the maximum number of spray states to be checked is 5 (No. 0,1,2,3,4). The numerical value set here determines the currently possible scanning rate of the sensor. The less the spray states to be checked, the faster the operation of the SI-JET2 spray jet sensor.

The numerical value set here refers to the number of rows (starting with row 0) in the → TEACH TABLE



OUTMODE:

This group of buttons offers the method of how to control the 5 digital outputs.

BINARY:

If in this row-by-row comparison the current spray state corresponds with the teach-in parameters entered in the TEACH TABLE, this "hit" in the TEACH TABLE is displayed as a vector number (V-No.) and is sent to the digital outputs (OUT0 ... OUT4) as a **bit pattern**.

The maximum number of spray states to be taught is 31.

DIRECT:

In this mode the maximum number of spray states to be taught is 5.

If in this row-by-row comparison the current parameters correspond with the teach-in parameters entered in the TEACH TABLE, this "hit" in the TEACH TABLE is displayed as a vector number (V-No.) and is sent **directly** to the digital outputs (OUT0 ... OUT4).

DIRECT HI:

If **DIRECT HI** is activated and if a line vector (V-no.: 0...4) is detected in the TEACH TABLE, the special digital output (OUT0 ... OUT4) is set to HI. If no line vector was detected, the digital outputs are in LO status (no LED is lighting).

DIRECT LO:

If **DIRECT LO** is activated and if a line vector (V-no.: 0...4) is detected in the TEACH TABLE, the special digital output (OUT0 ... OUT4) is set to LO, while the other ones are set to HI. If no line vector was detected, the digital outputs are in HI status (all LEDs are lighting).



INTLIM:

This edit box is used for setting an intensity limit. Evaluation is stopped, if the current intensity INT arriving at the receiver unit falls below this limit, and ERROR STATE (V-No.: =255) is output.

HOLD [ms] ▼

HOLD:

The SI-JET sensor operates with minimum scanning times in the magnitude of less than 150µs. This is why most of the PLCs that are connected to the digital outputs

OUT0 ... OUT4 have difficulties with the safe detection of the resulting short switching state changes. For the digital outputs of the SI-JET2 sensor pulse lengthening of up to 100 ms can be set by selecting the corresponding HOLD value.

RAM PARA
 EEPROM 1
 FILE 0

RAM, EEPROM, FILE :

This group of buttons controls parameter exchange between PC and sensor through the serial RS232 interface.

PARA:

With this switch the display of the TEACH TABLE at the PC screen can be switched on and off.

1: Display of function fields for entering and selecting general monitoring parameters.

0: Display of the TEACH TABLE for entering the individual parameters for the teach-in vectors.

[F9]

SEND:

When the SEND button is clicked (or shortcut key button F9 is pressed), all the currently set parameters are transferred between PC and sensor. The target of the respective parameter transfer is determined by the selected button (RAM, EEPROM, or FILE).

[F10]

GET:

The currently set values can be interrogated from the sensor by clicking on the GET button (or with shortcut key button F10). The source of data exchange is determined by the selected button (RAM, EEPROM, or FILE).

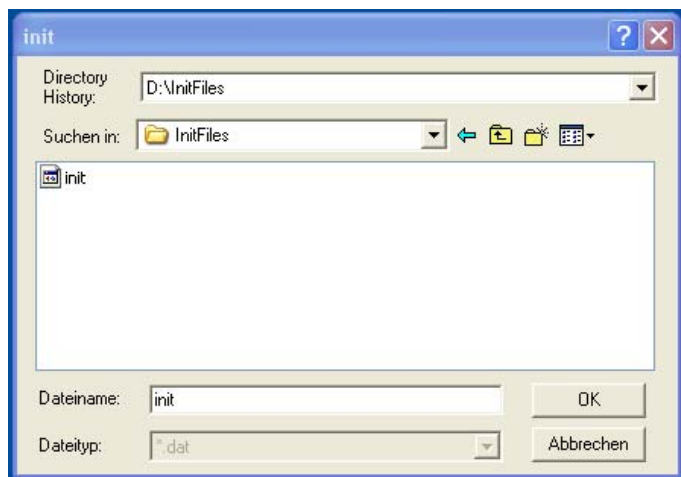
RAM: The current parameters are written into the RAM memory of the sensor, or they are read from the RAM, **i.e. these parameters are lost when the voltage at the sensor is switched off.**

EEPROM: The current parameters are written into the non-volatile memory of the EEPROM in the sensor, or they are read from the EEPROM, **i.e. the parameters in the internal EEPROM are stored when the voltage at the sensor is switched off.**

FILE: A click on this button opens an info field with the file name of the current parameter file.

PLEASE NOTE:

The current parameters are only stored in the current output file, or retrieved from the current output file, when the SEND or GET button is activated with a mouse click.



If another output file should be accessed, the file button must first be activated with the mouse pointer. Another dialog field then opens, in which an existing output file can be selected, or in which a file name for a new output file can be entered.



[F11]

GO:

A click on this button (or pressing shortcut key button F11) starts data transfer from the I-JET sensor to the PC through the serial RS232 interface. The currently measured data are shown in the corresponding display elements on the PC user interface.



[F12]

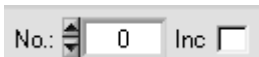
STOP:

A click on this button (or pressing shortcut key button F12) stops data transfer from the SI-JET sensor to the PC through the serial RS232 interface.



TEACH DATA TO:

A click on this button starts an automatic teach-in process. The current measured values are defined as teach-in values. The teach-in values are assigned to the teach-in gloss value selected in the **No.:** function field.



No.:

The line into which the current teach vector should be stored is selected with No.:

Inc:

When Inc is activated, and the TEACH DATA TO button is pressed, the No.: input field is automatically incremented (increased) by 1, i.e. the next line in the TEACH TABLE is selected.



RESET TABLE:

A click on this button resets the TEACH TABLE (RESET value = 1).

| |
|---------|
| DENSITY |
| 0 |
| SYM1 |
| 0 |
| SYM2 |
| 0 |
| CH_L |
| 0 |
| CH_C |
| 0 |
| CH_R |
| 0 |
| MAX_CHL |
| 0 |
| MAX_CHC |
| 0 |
| MAX_CHR |
| 0 |

Current calculated density

Current calculated symmetry 1

Current calculated symmetry 2

Current value of channel left

Current value of channel centre

Current value of channel right

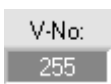
Maximum value of channel left during the last 60 seconds

Maximum value of channel centre during the last 60 seconds

Maximum value of channel right during the last 60 seconds



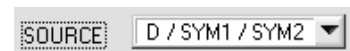
This display shows the current temperature that is measured in the sensor housing.



V-No.:

This numerical value output field displays the currently detected vector number in accordance with the entry in the TEACH TABLE. The currently detected vector number is sent to the digital outputs OUT0 ... OUT4 as a corresponding bit pattern.

Please note: The above-mentioned 5 output fields are only updated when data transfer between PC and SI-JET2 sensor is active (GO button pressed).



SOURCE:

A click on the arrow button opens a selection field for the selection of a display mode in the graphic display window.

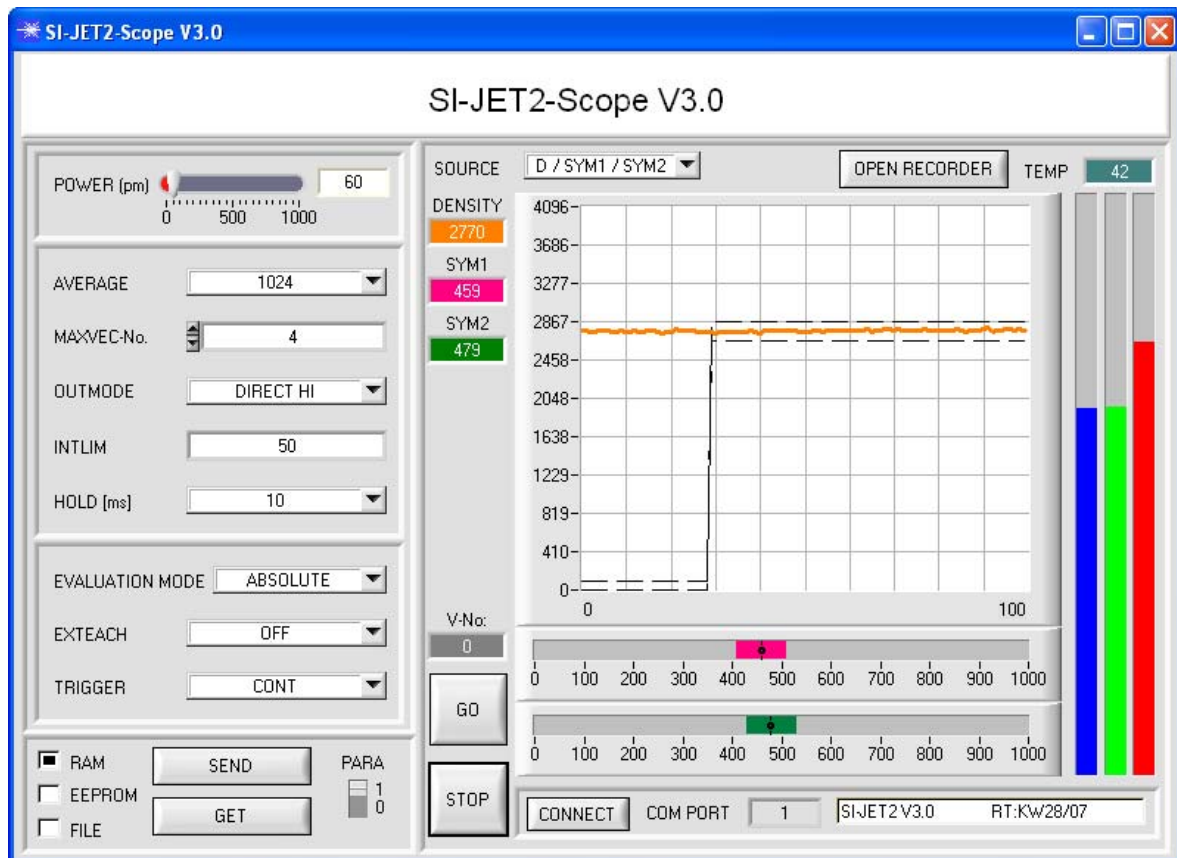
D / SYM1 / SYM2

The current density ,symmetry 1, and symmetry 2 are displayed.

RAW

The current raw signals are displayed.

4.1 EVALUATION MODE ABSOLUTE



In EVALUATION MODE ABSOLUTE all three channels CH_L, CH_C, and CH_R are used for calculating density, symmetry 1, and symmetry 2:

$$DENSITY = \frac{CH_L + CH_C + CH_R}{3} \quad SYM1 = \frac{CH_L}{CH_L + CH_R} * 1000$$

$$SYM2 = \frac{CH_C}{CH_C + \frac{CH_L + CH_R}{2}} * 1000$$

The current values for DENSITY, SYM1, and SYM2 are shown in displays on the PC user interface. CH_L, CH_C, and CH_R in addition are visualised in the form of bars at the right side of the graph. SOURCE is used to select the signal that should be visualised in the graph.

For teaching, the PARA switch must be set to 0.

When PARA has been switched over, the setting parameters will disappear and the TEACH TABLE will be displayed.

The sensor can be taught a total of 31 TEACH vectors.

| No. TEACH TABLE | | | | | | | SOURCE |
|-----------------|------|-----|-----|------|-----|------|---------|
| | D | DTO | S1 | S1TO | S2 | S2TO | DENSITY |
| 0 | 2770 | 100 | 459 | 50 | 479 | 50 | 2770 |
| 1 | 1 | 1 | 1 | 1 | 1 | 1 | SYM1 |
| 2 | 1 | 1 | 1 | 1 | 1 | 1 | 459 |
| 3 | 1 | 1 | 1 | 1 | 1 | 1 | SYM2 |
| 4 | 1 | 1 | 1 | 1 | 1 | 1 | 479 |
| 5 | 1 | 1 | 1 | 1 | 1 | 1 | |
| 6 | 1 | 1 | 1 | 1 | 1 | 1 | |
| 7 | 1 | 1 | 1 | 1 | 1 | 1 | |
| 8 | 1 | 1 | 1 | 1 | 1 | 1 | |
| 9 | 1 | 1 | 1 | 1 | 1 | 1 | |
| 10 | 1 | 1 | 1 | 1 | 1 | 1 | |
| 11 | 1 | 1 | 1 | 1 | 1 | 1 | |
| 12 | 1 | 1 | 1 | 1 | 1 | 1 | |
| 13 | 1 | 1 | 1 | 1 | 1 | 1 | |
| 14 | 1 | 1 | 1 | 1 | 1 | 1 | |

No.: Inc
V-No:

When the GO button is pressed, the DENSITY, SYM1, and SYM2 data that are currently calculated in the sensor are shown on the PC user interface.

When the TEACH DATA TO button is pressed, the data are written to the line in the TEACH TABLE that is selected under No.:

DTO is used for setting a plus/minus tolerance for the taught density. The value can be changed by the user. For this purpose the corresponding cell in the TEACH TABLE must be selected either with a double-click or with function key F2.

The higher the value of DTO, the more insensitive the sensor will be.

S1TO and S2TO are used for setting a plus/minus tolerance for the taught symmetry1 and symmetry2.

Once a vector has been taught, the information is transferred to the sensor by pressing the SEND button.

When the SEND button is pressed, the sensor stops data polling.

In order to check whether the sensor has adopted the teach vector, the GO button must be pressed again.

The currently detected line is displayed under V-No.:

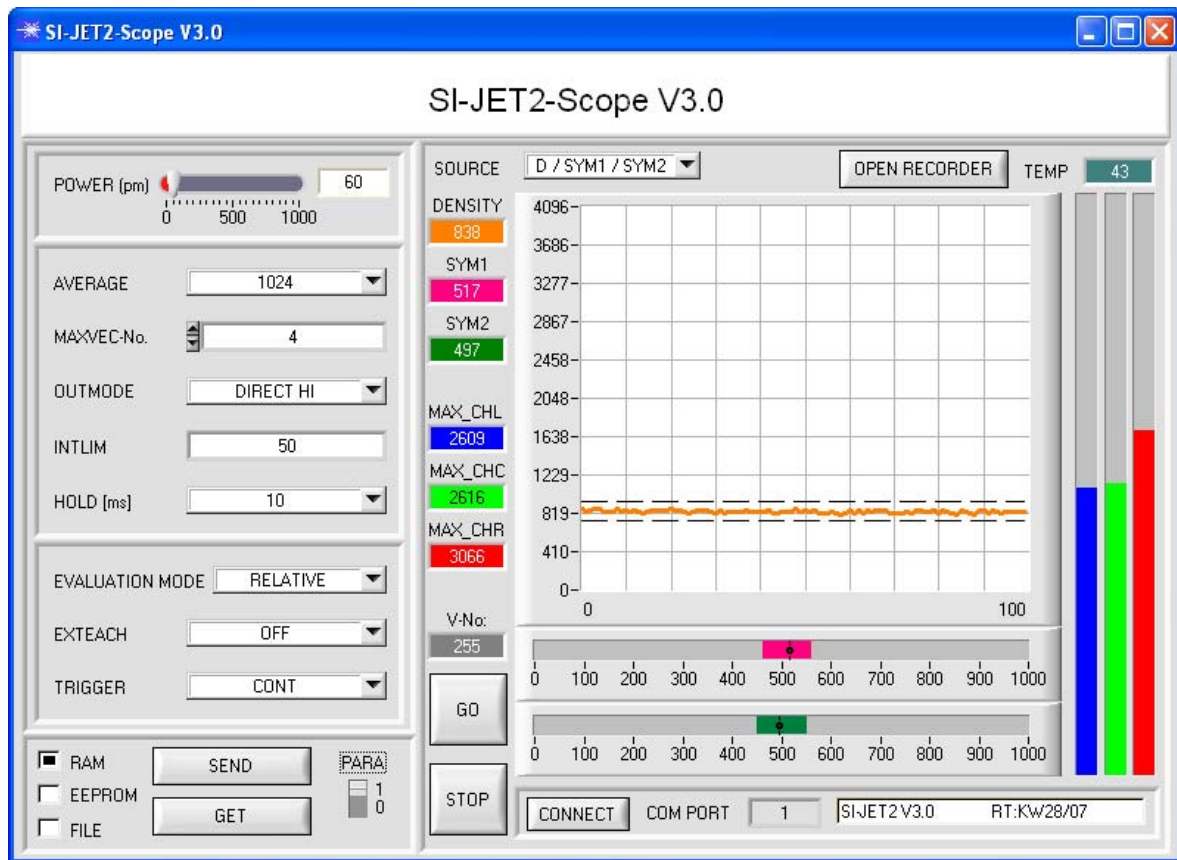


When D / SYM1 / SYM2 is selected under SOURCE, the currently determined values for density, symmetry 1, and symmetry 2 as well as the tolerance windows that were selected under No.: are displayed.

Please note!

The value range for density is 0 ... 4096.
The value range for SYM1 and SYM2 is 0 ... 1000.

4.2 EVALUATION MODE RELATIVE



In EVALUATION MODE RELATIVE all three channels CH_L, CH_C, and CH_R are standardised in relation to their respective maximum values during the last 60 seconds. These standardised values are then used for determining density, symmetry 1, and symmetry 2. The advantage of this evaluation mode is that the standardisation to the respective maximum value to a large extent compensates possible dirtying of the sensor.

It is important in this evaluation mode that within 60 seconds the sensor must be free for at least 2 continuous seconds so that the respective maximum values can be determined.

The actual evaluation of DENSITY, SYM1, and SYM2 is then performed as in evaluation mode ABSOLUTE.

$$CHL_N = 4096 - \frac{CH_L}{MAX_CHL} * 4096 \quad CHC_N = 4096 - \frac{CH_C}{MAX_CHC} * 4096 \quad CHR_N = 4096 - \frac{CH_R}{MAX_CHR} * 4096$$

$$DENSITY = CHC_N \quad SYM1 = \frac{CHL_N}{CHL_N + CHR_N} * 1000$$

$$SYM2 = \frac{CHC_N}{CHC_N + \frac{CHL_N + CHR_N}{2}} * 1000$$

4.3 Function of the data recorder (OPEN RECORDER)

The SI-JET2-Scope software features a data recorder that makes it possible to save a certain number of data frames. The recorded file is saved to the hard disk of the PC and can then be evaluated with a spreadsheet program.

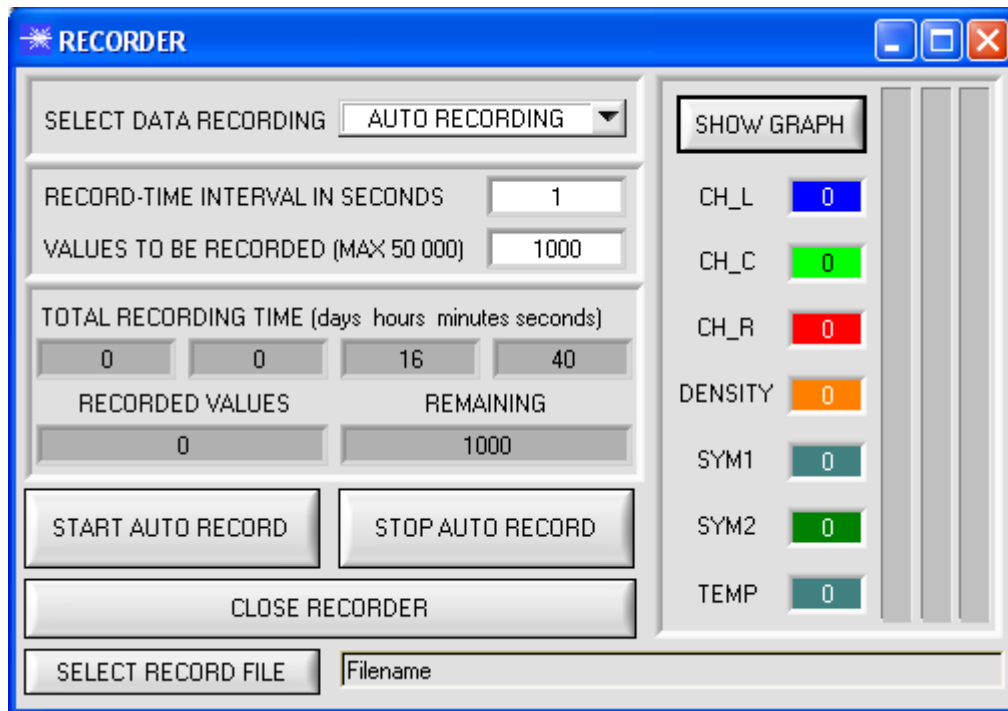
The created file has eight columns and as many rows as data frames were recorded. A row is structured as follows: Date and time, CH_L, CH_C, CH_R, DENSITY, SYM1, SYM2, TEMP.
 Attention! When the file is opened with EXCEL, date and time must be divided into two columns.

The following steps describe how data frames are recorded with the recorder:

Please note! The recording function depends on the selected EVALUATION MODE. In various EVALUATION MODES certain data are not needed and are therefore set to a value of 0, i.e. the value 0 will be recorded for these data.

When TRIGGER=EXT1 or EXT2 is chosen, only those data will be transferred that were calculated during triggering.

Step 1:
 Press the OPEN RECORDER button. The following window will be displayed:



Step 2:

If you want to automatically record several data frames, please select AUTO RECORDING under SELECT DATA RECORDING.

Enter a time interval for recording (in this example: 5, i.e. a new value is called from the sensor every five seconds). Then enter the maximum number of values you wish to record in the second input field.

SELECT DATA RECORDING AUTO RECORDING ▾

| | |
|------------------------------------|------|
| RECORD-TIME INTERVAL IN SECONDS | 5 |
| VALUES TO BE RECORDED (MAX 50 000) | 1000 |

Please note:

Recording can also be stopped earlier, the data recorded so far will not be lost.

These fields indicate how long recording will take (in days, hours, minutes, and seconds) if all data are recorded.

TOTAL RECORDING TIME (days hour minutes seconds)

| | | | |
|---|---|----|----|
| 0 | 1 | 23 | 20 |
|---|---|----|----|

Step 3:

By pressing the button SELECT RECORD FILE a file can be selected in which the data frame will be stored.

If you select an already existing file name, you will be asked whether you want to overwrite the existing file or not.

SELECT RECORD FILE

d:\Filename\record.dat

Step 4:

Pressing the START AUTO RECORD button starts automatic data recording.

START AUTO RECORD

RECORD FRAME MANUALLY

The recorder starts to record data, and the button is red to indicate that recording is active.

The respective data frames are shown in the display windows.

In the two display fields RECORDED VALUES and REMAINING you can check how many data frames have been recorded, and how many frames remain to be recorded.

Pressing the SHOW GRAPH button opens a graphic window that displays the recorded values

SHOW GRAPH

| | |
|---------|---|
| CH_L | 0 |
| CH_C | 0 |
| CH_R | 0 |
| DENSITY | 0 |
| SYM1 | 0 |
| SYM2 | 0 |
| TEMP | 0 |

Please note:

During recording the two input fields RECORD-TIME INTERVAL and VALUES TO BE RECORDED are inactive.

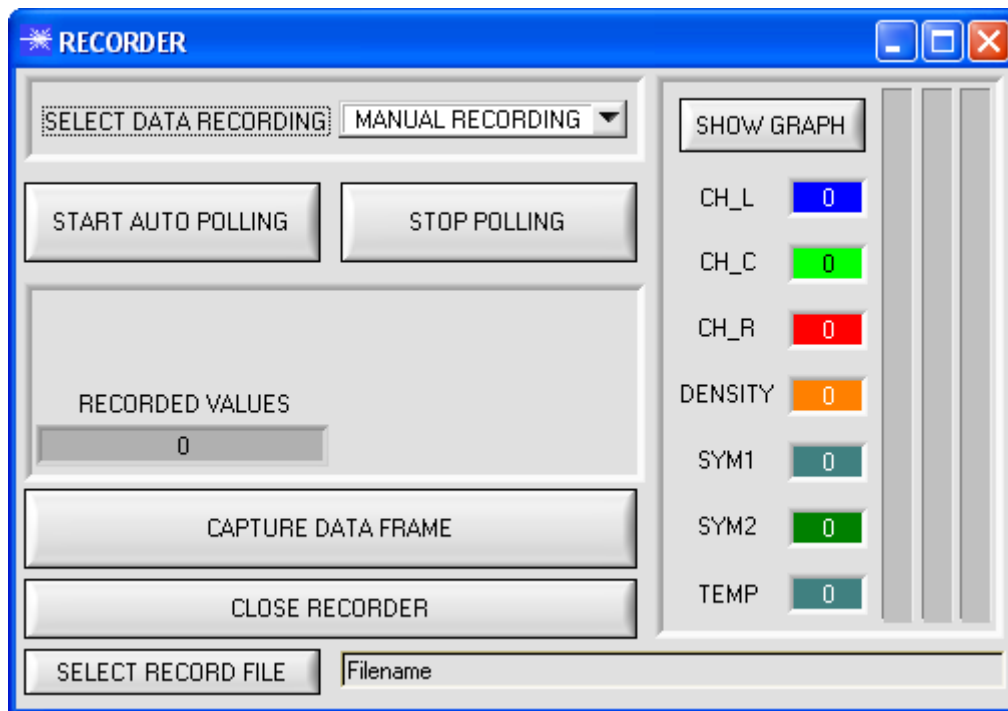
| | |
|-----------------|-----------|
| RECORDED VALUES | REMAINING |
| 6 | 994 |

Step 6:
Press the CLOSE RECORDER button to close the recorder and return to the main program.



If you want to record data "manually", please select the MANUAL RECORDING function under SELECT DATA RECORDING.

You can start reading data from the sensor by pressing the START POLLING button. These data are visualised in the display window. Pressing the CAPTURE DATA FRAME button saves a data frame in the file that was selected under SELECT RECORD FILE. The RECORDED VALUES field shows the sum of the frames already recorded.

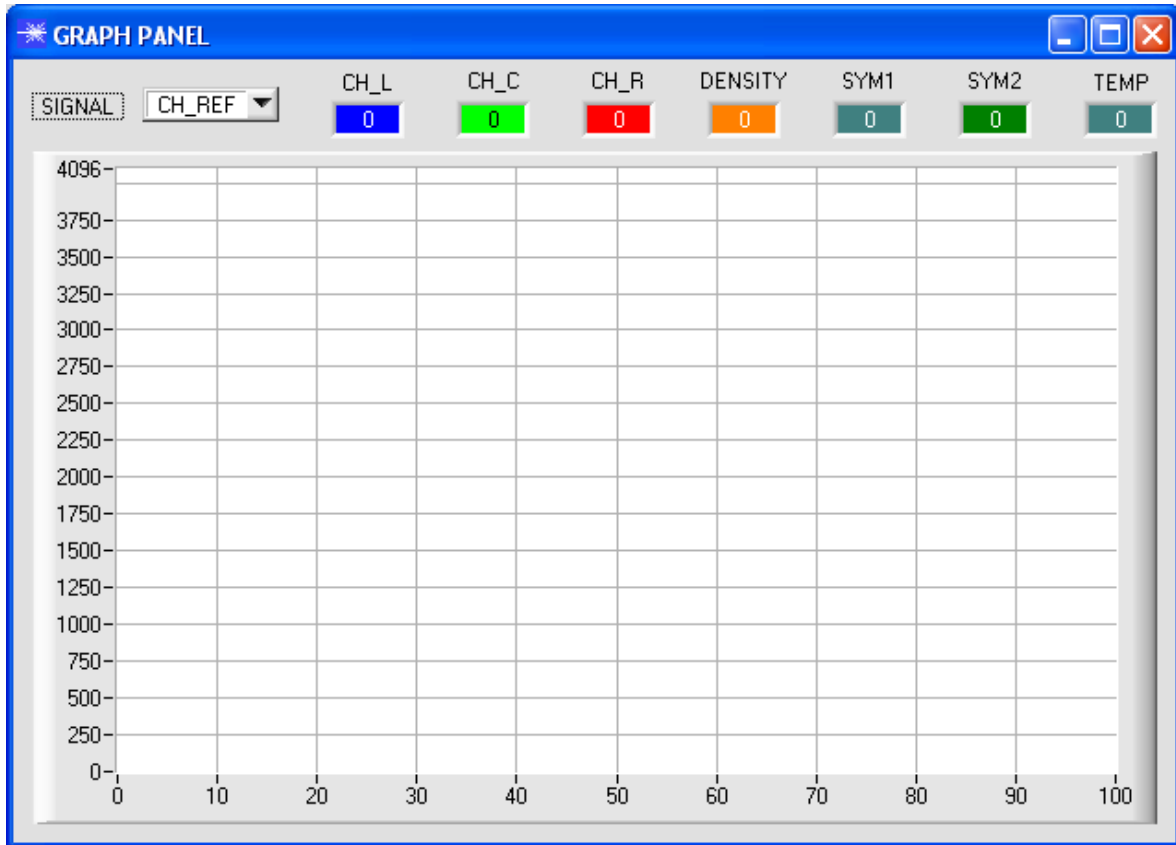


Please note:

When you press START AUTO RECORD, the file that is selected under SELECT RECORD FILE will be deleted. With RECORD FRAME MANUALLY, the file will be created if it does not already exist. If the file already exists, the data are added to the existing file.

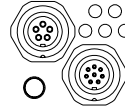
SHOW GRAPH

When the SHOW GRAPH button is pressed, a panel will be displayed that allows the user to monitor the different signals. The individual signals can be activated from the SIGNAL drop-down menu.



4.4 Function of the LED display

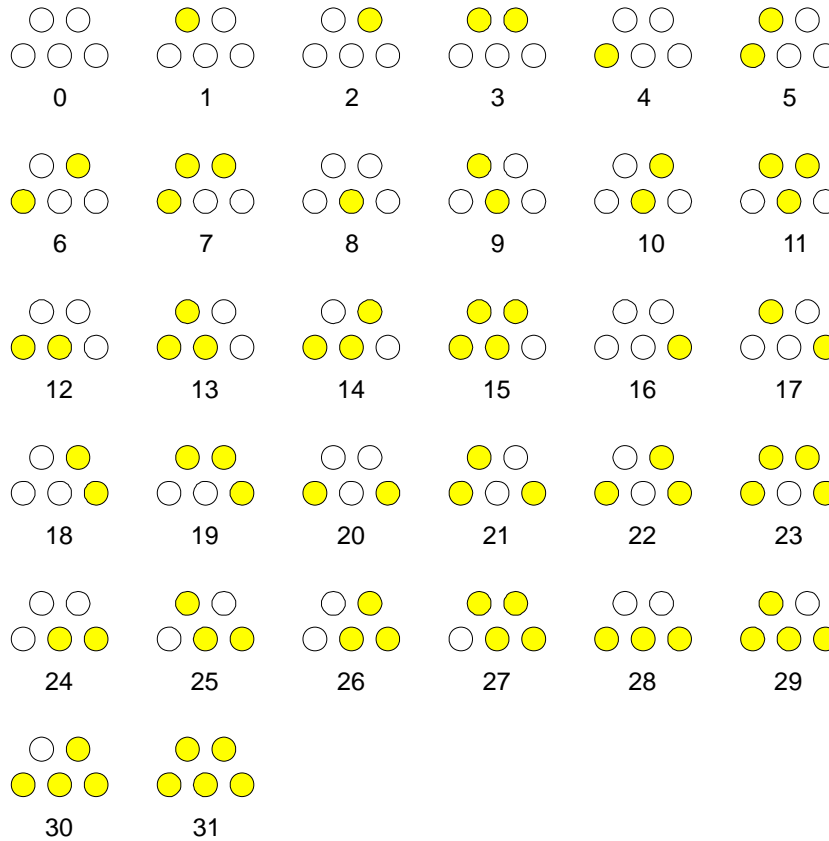
LED display:



BINARY

The line vector is visualised by way of 5 yellow LEDs at the housing of the SI-JET2 sensor. At the same time in the binary mode (OUTMODE BINARY) the line vector indicated on the LED display is output as 5-bit binary information at the digital outputs OUT0 to OUT4 of the 8-pole SI-JET2/PLC female connector.

The SI-JET2 sensor is able to process a maximum of 31 line vectors (0 ... 30) in accordance with the corresponding lines in the TEACH TABLE. An "error" or a "not detected" is displayed by the lighting of all LED (OUT0 ... OUT4) digital outputs are set to HIGH-level).



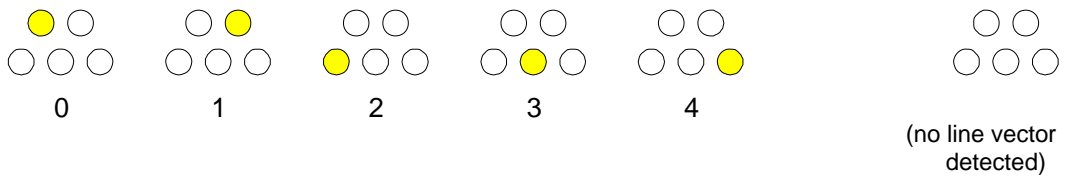
Error or
not detected

DIRECT

In the DIRECT mode (OUTMODE DIRECT HI or OUTMODE DIRECT LO) the maximum numbers of line vectors to be taught is 5 (no. 0, 1, 2, 3,4).

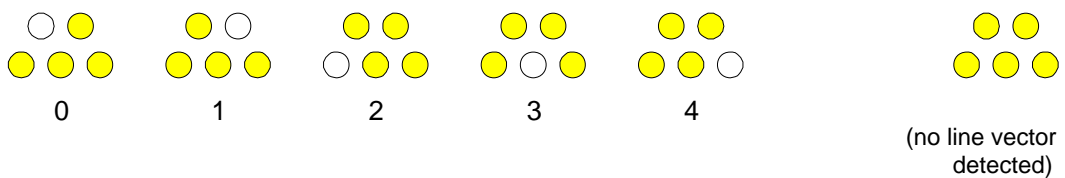
DIRECT HI:

If DIRECT HI is activated, the special digital output is set to HI while the other 4 are set to LO.
 If no line vector was detected, all digital outputs are set to LOW (no LED is lighting).



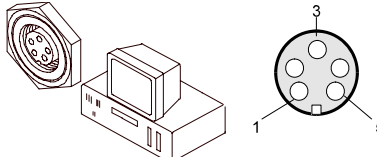
DIRECT LO:

If DIRECT LO is activated, the special digital output is set to LO, while the other 4 are set to HI.
 If no line vector was detected, all digital outputs are set to HIGH (all LED are lighting).

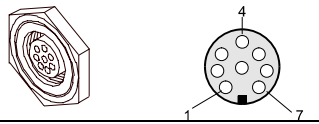


5. Connector assignment of the SI-JET2 system

Connection of SI-JET2 to PC:

| 5-pole fem. connector (type Binder 712) SI-JET2/PC-RS232 | |  |
|---|--|--|
| Pin No.: | | Assignment: |
| 1 | | 0V (GND) |
| 2 | | TxD |
| 3 | | RxD |
| 4 | | Not connected |
| 5 | | Not connected |

Connection of SI-JET2 to PLC:

| 8-pole fem. connector (type Binder 712) SI-JET2/SPS | |  |
|--|--------|---|
| Pin No.: | Color: | Assignment: |
| 1 | white | 0V (GND) |
| 2 | brown | +12VDC .. +30VDC |
| 3 | green | IN0 |
| 4 | yellow | OUT0 (Digital 0: Type 0 ... 1V, Digital 1: Type +Ub – 10%) |
| 5 | grey | OUT1 (Digital 0: Type 0 ... 1V, Digital 1: Type +Ub – 10%) |
| 6 | pink | OUT2 (Digital 0: Type 0 ... 1V, Digital 1: Type +Ub – 10%) |
| 7 | blue | OUT3 (Digital 0: Type 0 ... 1V, Digital 1: Type +Ub – 10%) |
| 8 | red | OUT4 (Digital 0: Type 0 ... 1V, Digital 1: Type +Ub – 10%) |

6. RS232 communication protocol

| RS232 communication protocol PC ↔ SI-JET2 sensor (SI-JET2-Scope V3.0) |
|--|
| <ul style="list-style-type: none"> - Standard RS232 serial interface without hardware-handshake - 3-wire: GND, TX0, RX0 - Speed: 19200 baud, 8 data-bits, no parity-bit, 1 stop-bit in binary mode, us (unsigned), MSB (most significant byte) first. <p>The control device (PC or PLC) has to send a data frame of 18 words to the SI JET2 hardware. All bytes must be transmitted in binary format (us, MSB). The meaning of the parameters is described in the software manual. Info: 1 word = 2 bytes</p> <p><u>Method:</u> The hardware is permanently reading (polling) the incoming byte at the RS232 connection. If the incoming word is 0x0055 (synch-word), then the 2. word (order-word) is read in, after this, 16 words (parameters) will be read. After reading in the completely data frame, the SI JET2 hardware executes the order which is coded at the 2. word (order-word).</p> |

| Format of the data frame: | | | |
|----------------------------------|--------|---------------------|---|
| Word No. | Format | Meaning | Comment: |
| 1 | Word | sync-word = 0x0055 | hex-code 0x0055, binary: 0000 0000 0101 0101, synchronisation word |
| 2 | Word | ORDER NUMBER | order word |
| 3 | Word | POWER | LED intensity (0 ... 1000) Attention intensity in thousandth! |
| 4 | Word | Free | Must be sent as dummy (e.g. 0) |
| 5 | Word | AVERAGE | Signal averaging 1,2,4,8,16,32,64,128,256,512,1024,2048,4096,8192,16384 or 32768 |
| 6 | Word | EVALUATION MODE | Evaluation mode ABSOLUTE or RELATIVE coded to (0,1) |
| 7 | Word | HOLD[ms] | Hold time 0,1,2,3,5,10,50 or 100ms coded to (0,1,2,3,5,10,50 or 100) |
| 8 | Word | INTLIM | Lower intensity limit (0 ... 4095) |
| 9 | Word | MAXVEC-No. | Number of the vectors (1,2,3,...,31) |
| 10 | Word | OUTMODE | Function of the digital output (0=direct/HI, 1=binary, 2=direct/LO) |
| 11 | Word | TRIGGER | Trigger mode CONT, EXT1, EXT2 (0,1,2) |
| 12 | Word | EXTERN TEACH | Extern Teach OFF or ON coded to (0,1) |
| 13-18 | Word | Free | Must be sent as dummy (e.g. 6 value 0) |

| Value | ORDER NUMBER | (parameter byte no. 2) |
|-------|---|------------------------|
| 0 | nop | no operation |
| 1 | Save parameter from PC into RAM | Cf. Example 1 |
| 2 | Save one selectable row of TEACH TABLE into RAM | Cf. Example 2 |
| 3 | Send parameter from RAM to PC | Cf. Example 3 |
| 4 | Send one selectable Row of TEACH TABLE from RAM to PC | Cf. Example 4 |
| 5 | Send data from RAM to PC | Cf. Example 5 |
| 6 | Save parameter from RAM to EEPROM | Cf. Example 6 |
| 7 | Send connection OK to PC | Cf. Example 8 |
| 8 | Load Parameter from EEPROM to RAM | Cf. Example 7 |
| 19 | Same as order 5 if TRIGGER=0 If TRIGGER = 1 or 2 only triggered values are transmitted | Cf. Example 5 |
| 20 | Send line ok = 0x0055, 0x0014, 0x00AA, 11 Dummies to PC | Cf. Example 9 |

Example 1: DATA FRAME with ORDER NUMBER = 1:

ORDER NUMBER (second word = 1): WRITE parameters from PC into RAM of the SI JET2!
 The completely data frame = 18 words must be sent to the SI JET2 hardware in binary form (sync-word / order-word / 16 parameter words).

DATA FRAME PC → SI JET2 (18 WORDS)

| | |
|--------|-----------------|
| 0x0055 | SYNC.-WORD |
| 1 | ORDER-WORD |
| 200 | POWER |
| 0 | DUMMY |
| 1024 | AVERAGE |
| 0 | EVALUATION MODE |
| 10 | HOLD[ms] |
| 10 | INTLIM |
| 5 | MAXVEC-No. |
| 0 | OUTMODE |
| 0 | TRIGGER |
| 0 | EXTER TEACH |
| 0 | DUMMY |
| 0 | DUMMY |
| 0 | DUMMY |
| 0 | DUMMY |
| 0 | DUMMY |
| 0 | DUMMY |

DATA FRAME SI JET2 → PC (18 WORDS)

| | |
|--------|-----------------|
| 0x00AA | SYNC.-WORD |
| 1 | ORDER-WORD |
| 200 | POWER |
| 0 | DUMMY |
| 1024 | AVERAGE |
| 0 | EVALUATION MODE |
| 10 | HOLD[ms] |
| 10 | INTLIM |
| 5 | MAXVEC-No. |
| 0 | OUTMODE |
| 0 | TRIGGER |
| 0 | EXTER TEACH |
| 0 | DUMMY |
| 0 | DUMMY |
| 0 | DUMMY |
| 0 | DUMMY |
| 0 | DUMMY |
| 0 | DUMMY |

Example 2: DATA FRAME with ORDER NUMBER = 2:

ORDER NUMBER (second word = 2): **WRITE one selectable row (vector) of TEACH TABLE into RAM of the SI JET2!**

The completely data frame = 18 words must be sent to the SI JET2 hardware in binary form (sync-word / order-word / ROW-NO / 4 parameter words = vector, 11 dummies).

Fill unused words of the TEACH VECTOR by value word=1 in binary form.

DATA FRAME PC → SI JET2 (18 WORDS)

| | |
|--------|------------------|
| 0x0055 | SYNC-WORD |
| 2 | ORDER-WORD |
| 0 | ROW-No. (0...30) |
| 2000 | D |
| 100 | DTO |
| 500 | S1 |
| 30 | S1TO |
| 400 | S2 |
| 25 | S2TO |
| 1 | DUMMY |
| 1 | DUMMY |
| 1 | DUMMY |
| 1 | DUMMY |
| 1 | DUMMY |
| 1 | DUMMY |
| 1 | DUMMY |
| 1 | DUMMY |
| 1 | DUMMY |
| 1 | DUMMY |

DATA FRAME SI JET2 → PC (18 WORDS)

| | |
|--------|------------------|
| 0x00AA | SYNC-WORD |
| 2 | ORDER-WORD |
| 0 | ROW-No. (0...30) |
| 2000 | D |
| 100 | DTO |
| 500 | S1 |
| 30 | S1TO |
| 400 | S2 |
| 25 | S2TO |
| 1 | DUMMY |
| 1 | DUMMY |
| 1 | DUMMY |
| 1 | DUMMY |
| 1 | DUMMY |
| 1 | DUMMY |
| 1 | DUMMY |
| 1 | DUMMY |
| 1 | DUMMY |
| 1 | DUMMY |

Example 3: DATA FRAME with ORDER NUMBER = 3:

ORDER NUMBER (second word = 3): READ parameters out of SI JET2-RAM memory!
 The same frame as example 1 must be sent to the SI JET2 hardware except of the order word that must be **3**.
 The values for the parameters must be sent as Dummies.
 The complete DATA FRAME which is responded by the SI JET2 hardware is 18 words.

DATA FRAME PC → SI JET2 (18 WORDS)
DATA FRAME SI JET2 → PC (18 WORDS)

| | |
|--------|-----------------|
| 0x00AA | SYNC-WORD |
| 3 | ORDER-WORD |
| 200 | POWER |
| 0 | DUMMY |
| 1024 | AVERAGE |
| 0 | EVALUATION MODE |
| 10 | HOLD[ms] |
| 10 | INTLIM |
| 5 | MAXVEC-No. |
| 0 | OUTMODE |
| 0 | TRIGGER |
| 0 | EXTER TEACH |
| 0 | DUMMY |
| 0 | DUMMY |
| 0 | DUMMY |
| 0 | DUMMY |
| 0 | DUMMY |
| 0 | DUMMY |

Example 4: DATA FRAME with ORDER NUMBER = 4:

ORDER NUMBER (second word = 4): READ one selectable row (vector) from RAM of the SI JET2!
 The same frame as example 2 must be sent to the SI JET2 hardware except of the order word that must be **4**.
 The values for the parameters must be sent as Dummies.
 The complete DATA FRAME which is responded by the SI JET2 hardware is 18 words.

DATA FRAME PC → SI JET2 (18 WORDS)
DATA FRAME SI JET2 → PC (18 WORDS)

| | |
|--------|------------------|
| 0x00AA | SYNC-WORD |
| 4 | ORDER-WORD |
| 0 | ROW-No. (0...30) |
| 2000 | D |
| 100 | DTO |
| 500 | S1 |
| 30 | S1TO |
| 400 | S2 |
| 25 | S2TO |
| 1 | DUMMY |
| 1 | DUMMY |
| 1 | DUMMY |
| 1 | DUMMY |
| 1 | DUMMY |
| 1 | DUMMY |
| 1 | DUMMY |
| 1 | DUMMY |
| 1 | DUMMY |

Example 5: DATA FRAME with ORDER NUMBER = 5:

ORDER NUMBER (second word = 5): READ SI JET2 RAW DATA

Parameters must be sent for a constant parameter frame as dummies.

At order word **5** they do not affect the RAM or EEPROM.

ORDER NUMBER = 19 is similar. but if TRIGGER = 1 or 2 only triggered values are transmitted.

DATA FRAME PC → SI JET2 (18 WORDS)

| | |
|--------|------------|
| 0x0055 | SYNC-WORD |
| 5 | ORDER-WORD |
| 0 | DUMMY |
| 0 | DUMMY |
| 0 | DUMMY |
| 0 | DUMMY |
| 0 | DUMMY |
| 0 | DUMMY |
| 0 | DUMMY |
| 0 | DUMMY |
| 0 | DUMMY |
| 0 | DUMMY |
| 0 | DUMMY |
| 0 | DUMMY |
| 0 | DUMMY |
| 0 | DUMMY |
| 0 | DUMMY |
| 0 | DUMMY |
| 0 | DUMMY |

DATA FRAME SI JET2 → PC (18 WORDS)

| |
|---------|
| 0x00AA |
| 5 |
| CH_L |
| CH_C |
| CH_R |
| DENSITY |
| SYM1 |
| SYM2 |
| V-No: |
| TEMP |
| MAX_CHL |
| MAX_CHC |
| MAX_CHR |
| DUMMY |
| DUMMY |
| DUMMY |
| DUMMY |
| DUMMY |

Example 6: DATA FRAME with ORDER NUMBER = 6:

ORDER NUMBER (second word = 6): SAVE parameters from RAM to EEPROM of the SI JET2!
 The complete data frame = 18 words must be sent to the SI JET2 hardware in binary form (sync-word / order-word / 16 parameter words).

DATA FRAME PC → SI JET2 (18 WORDS)

| | |
|--------|------------|
| 0x0055 | SYNC-WORD |
| 6 | ORDER-WORD |
| 0 | DUMMY |
| 0 | DUMMY |
| 0 | DUMMY |
| 0 | DUMMY |
| 0 | DUMMY |
| 0 | DUMMY |
| 0 | DUMMY |
| 0 | DUMMY |
| 0 | DUMMY |
| 0 | DUMMY |
| 0 | DUMMY |
| 0 | DUMMY |
| 0 | DUMMY |
| 0 | DUMMY |
| 0 | DUMMY |
| 0 | DUMMY |

After sending this data frame, the sensor saves all the parameters and teach vectors from its RAM (volatile memory) to its EEPROM (non volatile memory).

ATTENTION: The right parameters and teach vectors must be in the RAM of the sensor. To save the parameters and teach vectors into RAM see **Example1** and **Example2**.

After completing the sensor writes back an echo of the same frame.

DATA FRAME SI JET2 → PC (18 WORDS)

| | |
|--------|------------|
| 0x00AA | SYNC-WORD |
| 6 | ORDER-WORD |
| 0 | DUMMY |
| 0 | DUMMY |
| 0 | DUMMY |
| 0 | DUMMY |
| 0 | DUMMY |
| 0 | DUMMY |
| 0 | DUMMY |
| 0 | DUMMY |
| 0 | DUMMY |
| 0 | DUMMY |
| 0 | DUMMY |
| 0 | DUMMY |
| 0 | DUMMY |
| 0 | DUMMY |
| 0 | DUMMY |
| 0 | DUMMY |

Example 7: DATA FRAME with ORDER NUMBER = 8:

ORDER NUMBER (second word = 8): Load parameters from EEPROM to RAM of the SI JET2!
 The complete data frame = 18 words must be sent to the SI JET2 hardware in binary form (sync-word / order-word / 16 parameter words).

DATA FRAME PC → SI JET2 (18 WORDS)

| | |
|--------|------------|
| 0x0055 | SYNC-WORD |
| 8 | ORDER-WORD |
| 0 | DUMMY |
| 0 | DUMMY |
| 0 | DUMMY |
| 0 | DUMMY |
| 0 | DUMMY |
| 0 | DUMMY |
| 0 | DUMMY |
| 0 | DUMMY |
| 0 | DUMMY |
| 0 | DUMMY |
| 0 | DUMMY |
| 0 | DUMMY |
| 0 | DUMMY |
| 0 | DUMMY |
| 0 | DUMMY |
| 0 | DUMMY |

After sending this data frame, the sensor loads all the parameters and teach vectors from its EEPROM (non volatile memory) to its RAM (volatile memory).

ATTENTION: The EEPROM parameters must be load first to the RAM to read it from the sensor. To get the parameters and teach vectors from RAM see **Example3** and **Example4**.

After completing the sensor writes back an echo of the same frame.

DATA FRAME SI JET2 → PC (18 WORDS)

| | |
|--------|------------|
| 0x00AA | SYNC-WORD |
| 8 | ORDER-WORD |
| 0 | DUMMY |
| 0 | DUMMY |
| 0 | DUMMY |
| 0 | DUMMY |
| 0 | DUMMY |
| 0 | DUMMY |
| 0 | DUMMY |
| 0 | DUMMY |
| 0 | DUMMY |
| 0 | DUMMY |
| 0 | DUMMY |
| 0 | DUMMY |
| 0 | DUMMY |
| 0 | DUMMY |
| 0 | DUMMY |
| 0 | DUMMY |

Example 8: DATA FRAME with ORDER NUMBER = 7:

ORDER NUMBER (second word = 7): SEND CONNECTION OK from the SI JET2 to PC!

Cf. example 1:

Send the same DATA FRAME but with ORDER NUMBER 7 to the sensor.

The sensor will reply with 18 words which tell the version of the sensor.

Example 9: DATA FRAME with ORDER NUMBER = 20:

ORDER NUMBER (second word = 20): SEND LINE OK from the SI JET2 to PC!

Cf. example 1:

Send the same DATA FRAME but with ORDER NUMBER 20 to the sensor.

The sensor will reply with the same 18 words but with SYNC-WORD=0x00AA which tell that there is a connection.