

# SPECTRO1-Scope: Changes due to software update from SPECTRO1-Scope V2.2 to V2.3

This manual summarises the changes that were made with the software update from **SPECTRO1 V2.2 to V2.3**.

A software update from V2.x to V2.3 can be performed quite easily.

All you need is the FirmwareLoader V1.1 and the firmware files for version 2.3.

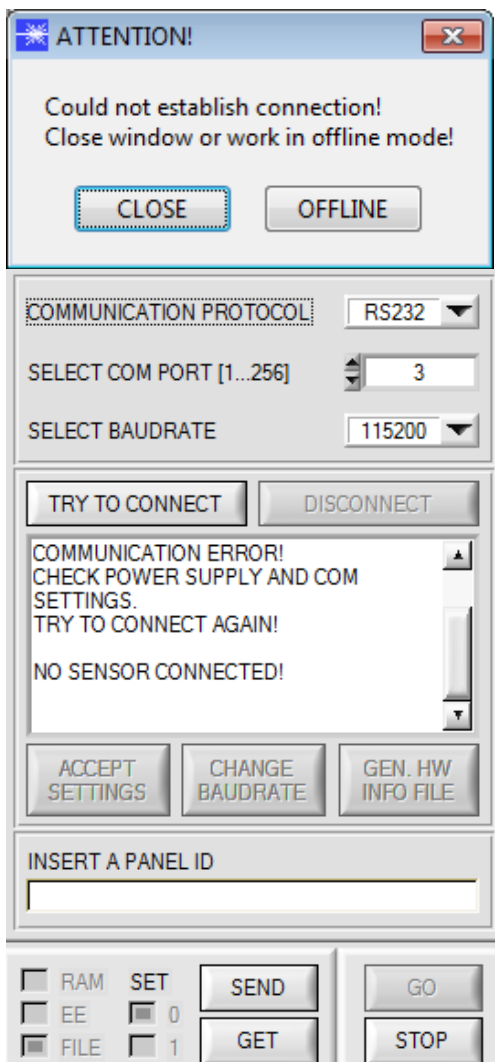
The FirmwareLoader V1.1 can be found on the CD that is provided with the sensor or can be downloaded from our homepage.

The firmware files are available from your sensor supplier.

The respective procedure is exactly described in the "[Manual FirmwareLoader V1\\_1](#)" file

(see software CD/DVD: Folder Support Software → Version Update → FirmwareLoader V1.1).

## Change 1:

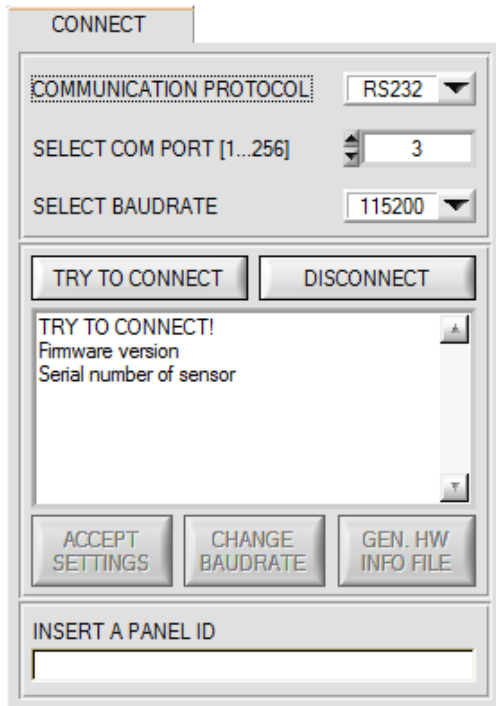


If a connection is not established automatically, e.g. if no sensor is connected, the software can be run in OFFLINE mode. In offline mode it is only possible to exchange parameters with a file on a storage medium, which often is helpful for the purpose of analysing parameter files.

If a sensor is connected and a connection still cannot be established, either the SCOPE version (program on the PC) and the firmware version (program in the sensor) do not match, or the interface to the sensor must be correctly configured.

If different Scope and firmware versions should be the problem, please get the Scope version that matches the firmware from your supplier.

## Change 2:



1. When a connection is established the serial number of the contacted sensor is transferred in addition to the firmware version.
2. The baudrates have been extended with 230400 and 460800.
3. **DISCONNECT** disconnects the connection between sensor and PC. The software then switches to OFFLINE mode, where it is only possible to exchange parameters with a file on a storage medium. The interface is then free for other programs (e.g. FirmwareLoader).

## Change 3:

The format for the firmware and for the Scope version number has been changed.

The full version number now is a 3-character combination (a.b.c). Firmware and software can be run in combination if the first two characters (a.b) match. The third character c has been introduced to identify the remedying of possible software bugs.

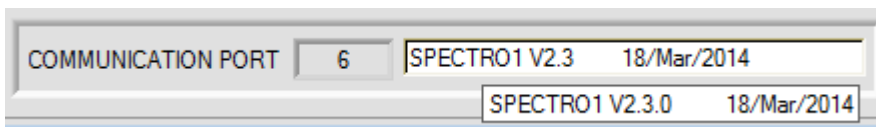
It is thus easy for the user to make sure he always uses the most recent version.

The full Scope version number is displayed after approx. 2 seconds when you move the mouse pointer on the Scope version.

### SPECTRO1 Scope V2.3

SPECTRO1 Scope V2.3.0

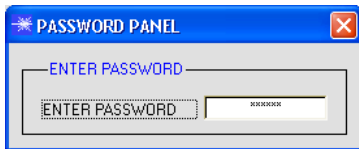
The full firmware version number is displayed after approx. 2 seconds when you move the mouse pointer on the status line.



## Change 4:

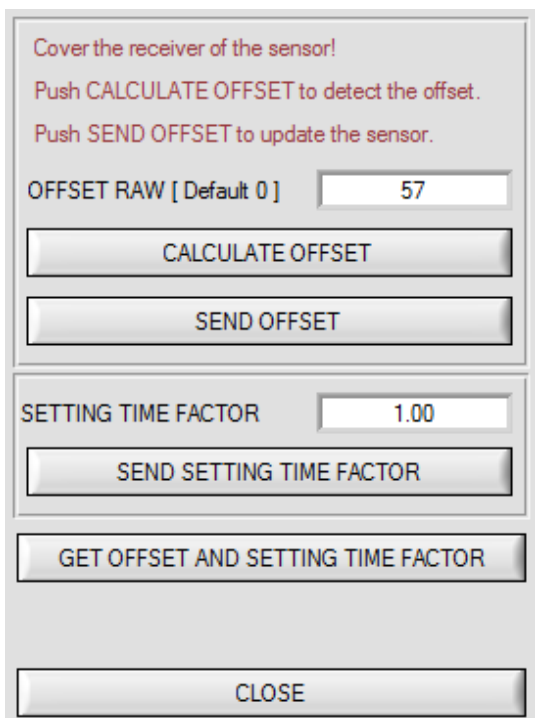


e.g. here:  
Double-click with  
the right mouse  
button.



Accessing offset calibration now requires a double-click with the right mouse button in the **PARA** tab exactly on the frame under INTEGRAL in.

You will then be prompted for a password.  
The password is: mellon



This tab is now more clearly structured, but there are no other changes here.