

SPECTRO1-Scope: Changes due to software update from SPECTRO1-Scope V2.4 to V2.5

This manual summarises the changes that were made with the software update from **SPECTRO1 V2.4** to **V2.5**.

A software update from V2.x to V2.5 can be performed quite easily.

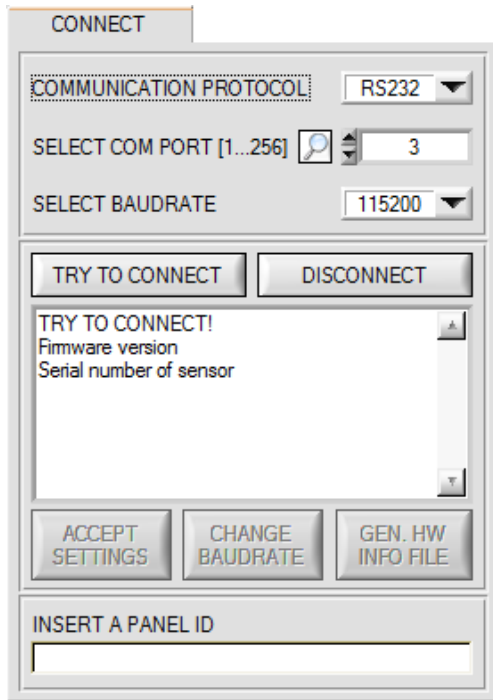
All you need is the FirmwareLoader V1.1 and the firmware files for version 2.5.

The FirmwareLoader V1.1 can be found on the software CD/DVD that is provided with the sensor or can be downloaded from our homepage.

The firmware files are available from your sensor supplier.

The respective procedure is exactly described in the "[Manual FirmwareLoader V1_1](#)" file (see software CD/DVD: Folder Support Software → Version Update → FirmwareLoader V1.1).

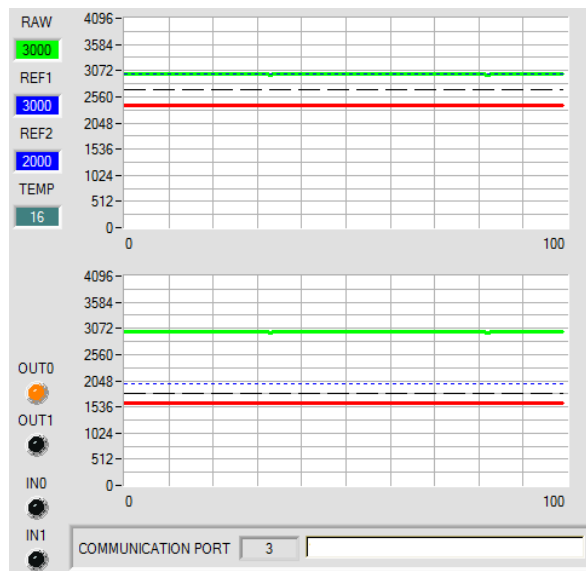
Change 1:



Click on the magnifier icon to show a list of all possible COM ports in the display.

Change 2:

There is a new **THRESHOLD MODE = 2 TRSH**



THRESHOLD MODE = 2 TRSH:

Two switching thresholds are available in this mode.

Switching threshold1(2) = **REF1(2) – TOLERANCE 1(2)**
Hysteresis threshold1(2) = **REF1(2) – HYSTERESIS 1(2)**

When the current **RAW** measurement value drops below switching threshold 1 or 2, digital output **OUT0** or **OUT1** is set to error.

When the current measurement value becomes higher than hysteresis threshold 1 or 2 again, the error output is reset again.