

SPECTRO-3 Series

Changes from SPECTRO3-Scope V3.2 to SPECTRO3-Scope V3.3

The text below provides a short summary of the changes made with the software-update from **SPECTRO3-Scope V3.2** to **V3.3**.

Change 1:

If **EVALUATION MODE = FIRST HIT** is set, all the rows up to **MAXCOL-No.** are filled with the same teach values with **EXTEACH = ON**, **STAT1** and **DYN1**.

CONNECT PARA1 PARA2 TEACH TABLE
RECORDER CALIBRATE TABLE ATTRIBUTES

POWER MODE

POWER (pm) 500
0 500 1000

LED MODE DYNWIN HI

GAIN DYNWIN LO

AVERAGE

INTEGRAL

MAXCOL-No.

OUTMODE

INTLIM

EVALUATION MODE

CALCULATION MODE

EXTEACH TRIGGER

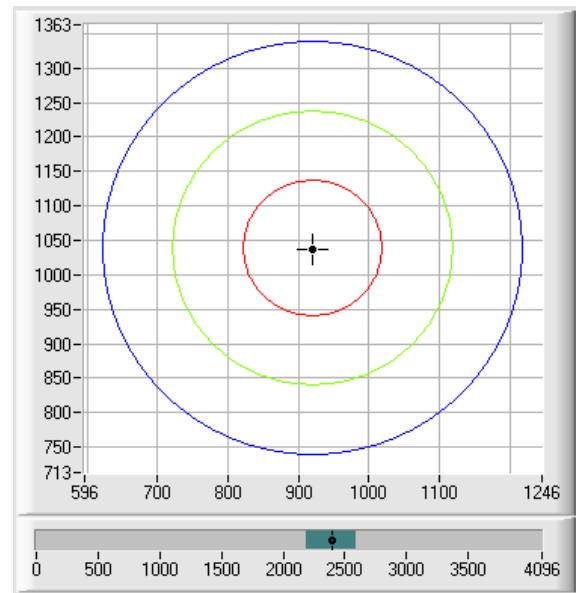
RAM
 EEPROM
 FILE

OFF
ON
STAT1
✓ DYN1

GO
STOP

CONNECT PARA1 PARA2 TEACH TABLE
RECORDER CALIBRATE TABLE ATTRIBUTES

	X	Y	CTO	INT	ITO	
0	921	1038	100	2393	100	Red
1	921	1038	200	2393	200	Green
2	921	1038	300	2393	300	Blue
3	1	1	1	1	1	Black



Change 2:

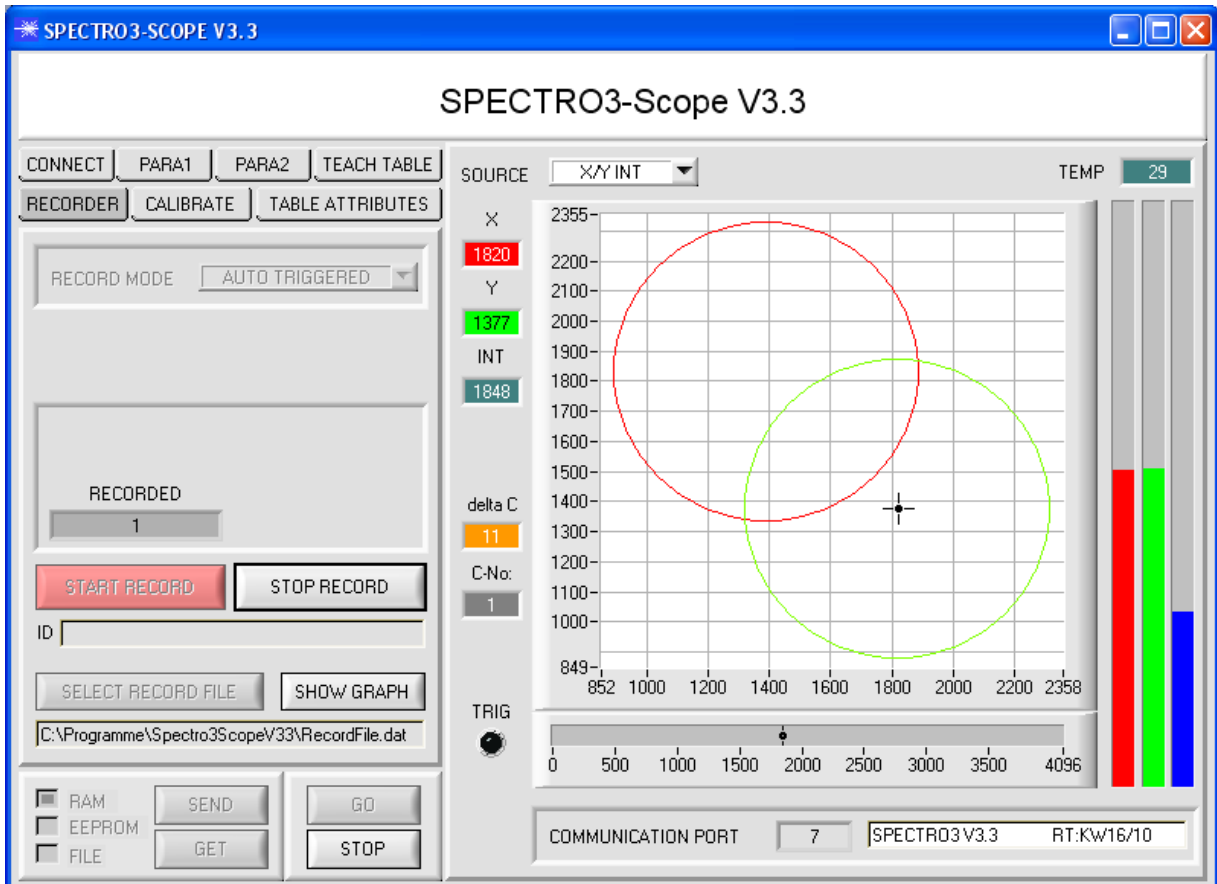
With **TRIGGER = SELF** and **EXT3** the color that was detected for the longest time during the "trigger" is output after the "trigger" has dropped.

Furthermore the average is now output over **X, Y, INT** (or **s, i, M**) and **delta C**. The average is formed from all the "color hits".

The average is output once immediately after dropping of the trigger.

Afterwards individual values will be transferred again.

The average values can be acquired by the **SPECTRO3-SCOPE V3.3** or **SPECTRO3-MONITORING V1.0** software in **RECORD MODE = AUTO TRIGGERED**.



Change 3:

This is not a change but rather an extension.

In parallel to the **SPECTRO3-Scope V3.3** software, a **SPECTRO3-MONITORING V1.0** software is now also available. This software displays and records the current data of up to 8 sensors.

For detailed information please refer to the **SPECTRO3-MONITORING V1.0** manual.

