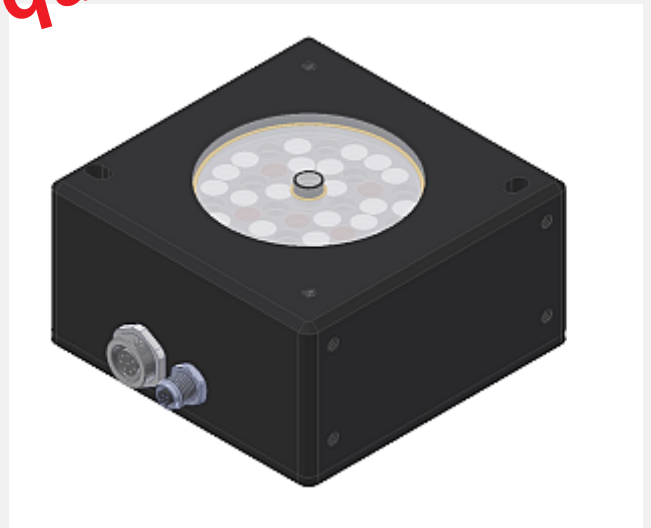


# SPECTRO Series

## ► SPECTRO-3-12-DIF-MSM-DIG-VISUV

- **Color measurement** (color, contrast, and gray scale detection)
- Object distance (measuring range) 12 mm ± 1 mm
- Reduction of gloss effect due to diffuse illumination (volume lenses serve as a diffusor, for optimal scattering effect)
- L\*a\*b\*, L\*C\*h\*, L\*u\*v\*, L\*u'v' and x,y,z calculation (CIE standard)
- Up to 31 colors (max. 18 in "read" mode) can be stored
- 24x warm-white LED (diffuse) incl. interference filter, 6x UV LED and 12x blue-light LED (D65 similar LED light), AC-, DC-operation or OFF for luminous objects can be switched)
- Insensitive to outside light (in AC-operation)
- Scan frequency max. 35 kHz (in DC- and OFF-operation)
- Switching frequency typ. 60 kHz
- 5 digital outputs to output taught colors
- TEACH via PC or external input
- Various evaluation algorithms can be activated
- "BEST HIT" mode ("human color assessment")
- Averaging can be activated (from 1 up to over 32000 values)
- Parameterizable via Windows® software, scope function
- RS232 interface (USB or Ethernet adapter is available)
- Temperature compensated
- 3-color filter detector (true color detector: "human color perception")



### Design

#### Product name:

#### SPECTRO-3-12-DIF-MSM-DIG-VISUV

(incl. Windows® PC software  
SPECTRO3-MSM-DIG-Scope)

#### Accessories: (p. 8)

#### SPECTRO-3-12-DIL-OFL (Spacer)

